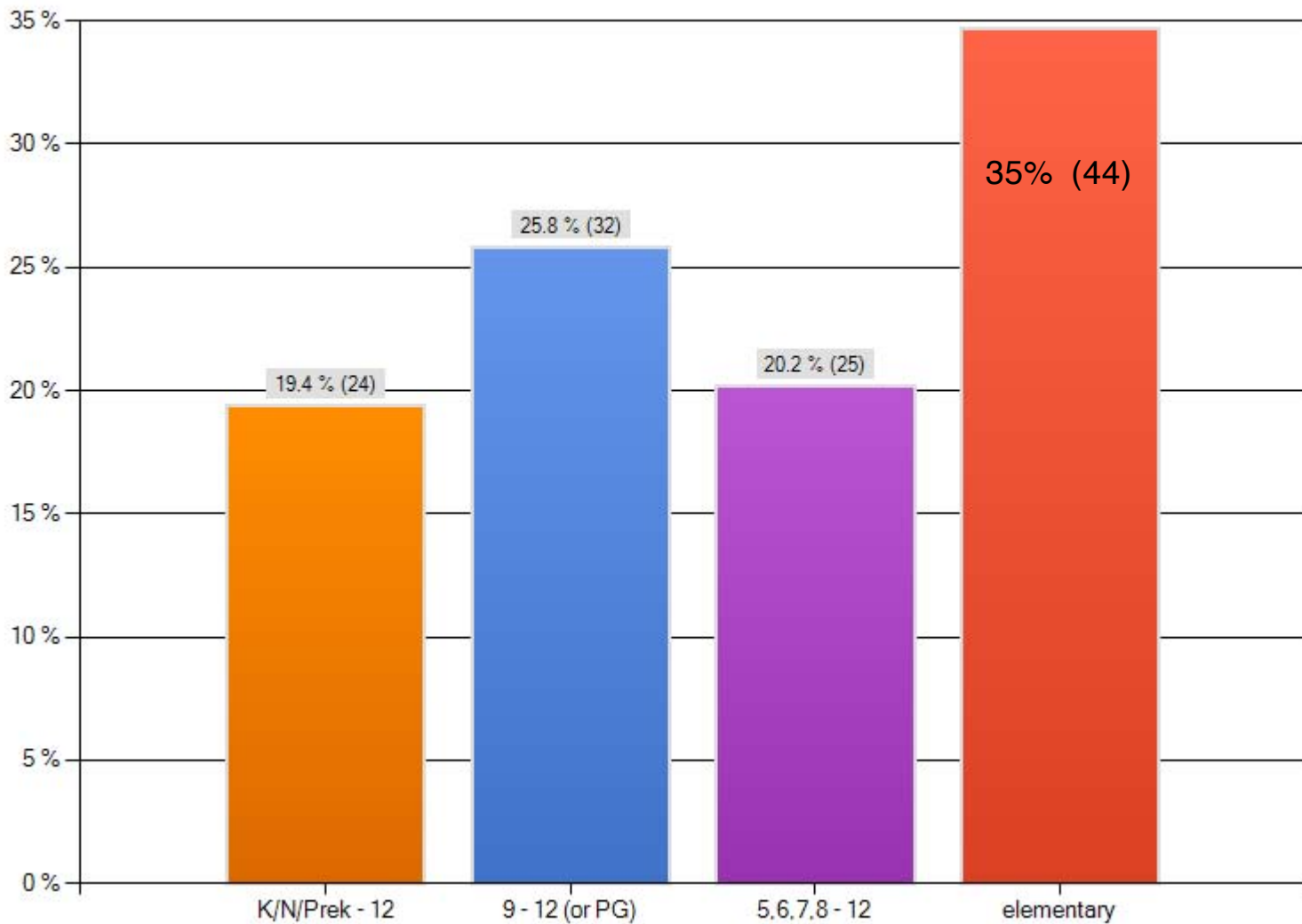
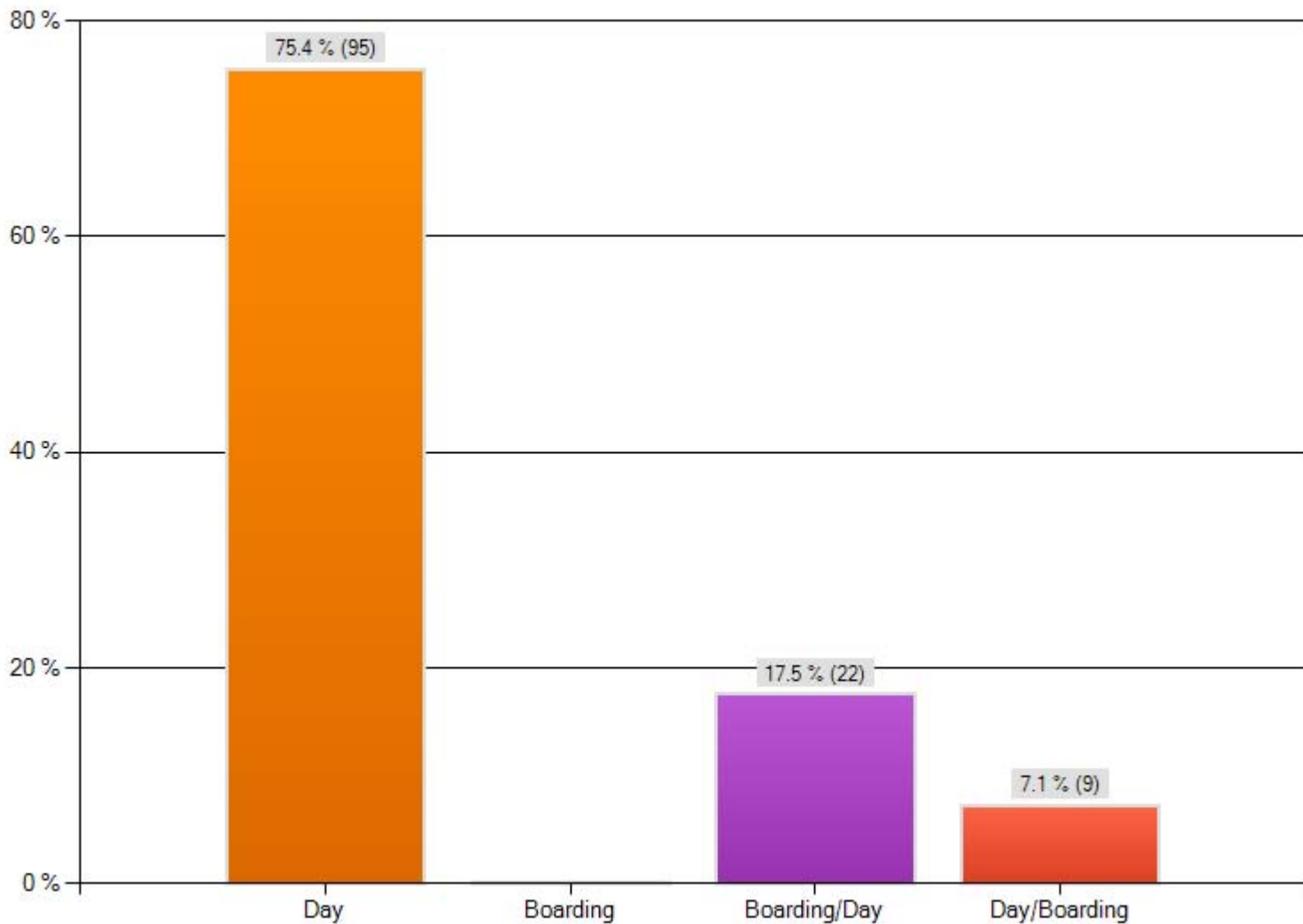


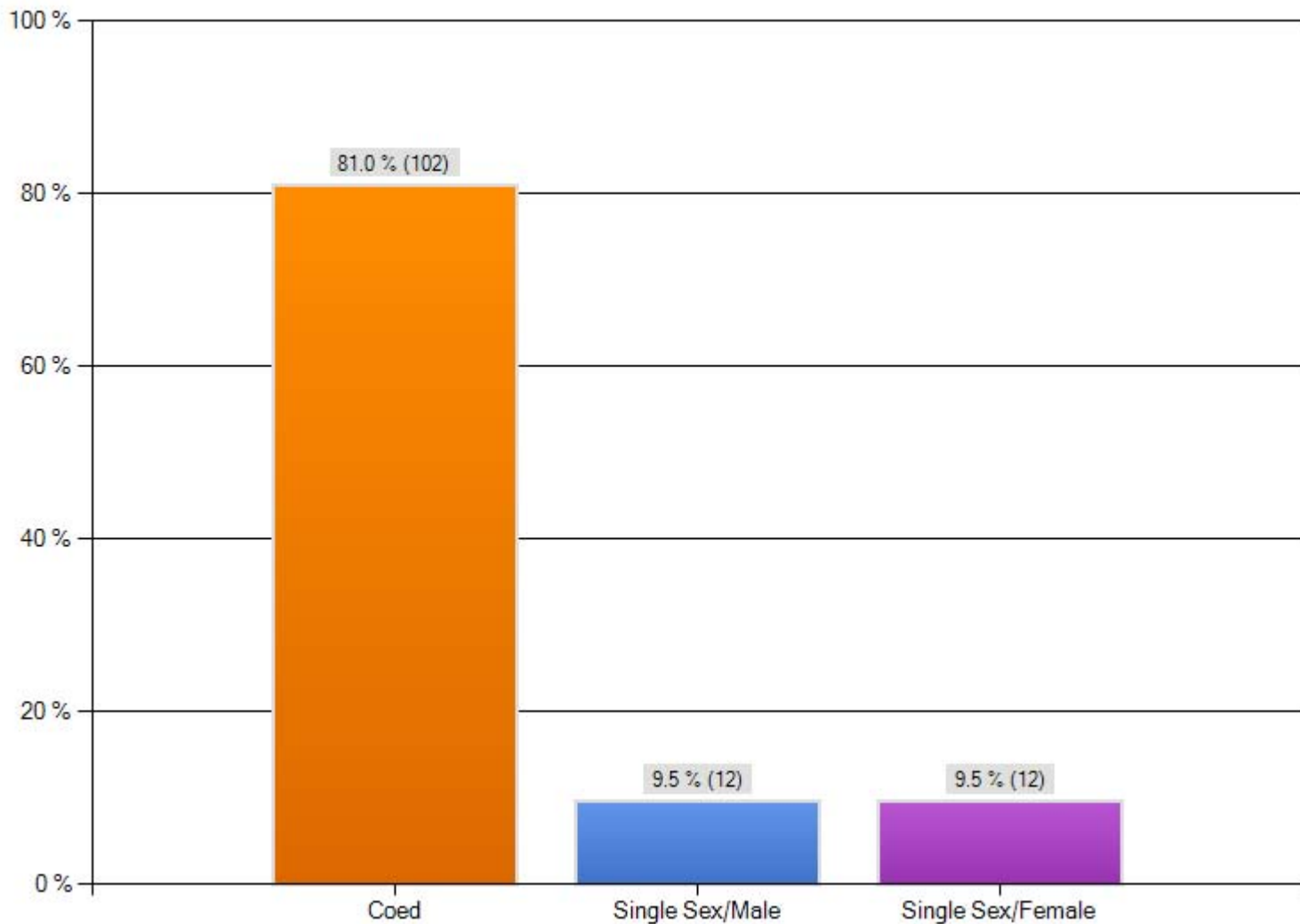
Demographics: Is your school... ? Check best answer.



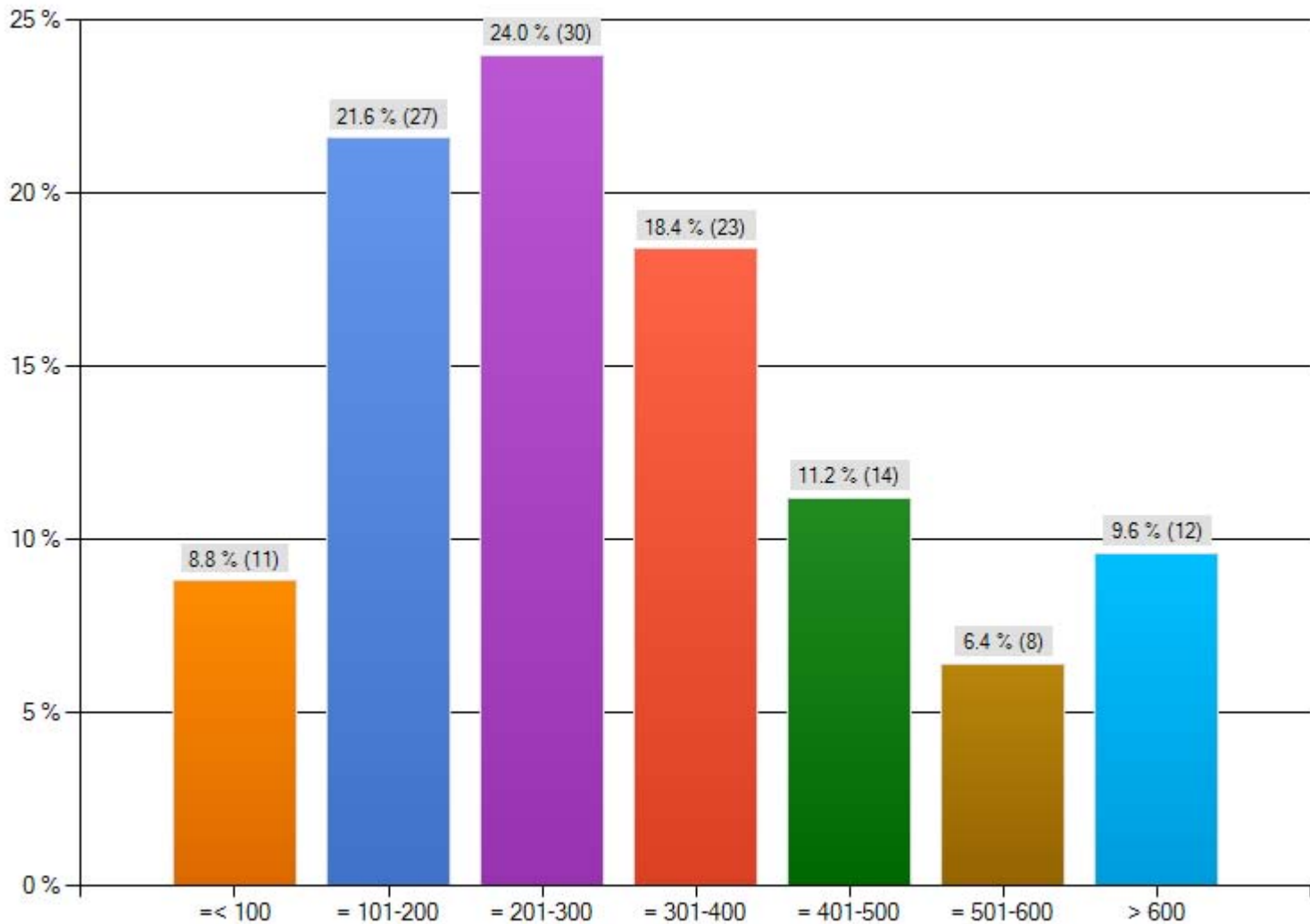
Demographics: Is your school...? Choose best answer.



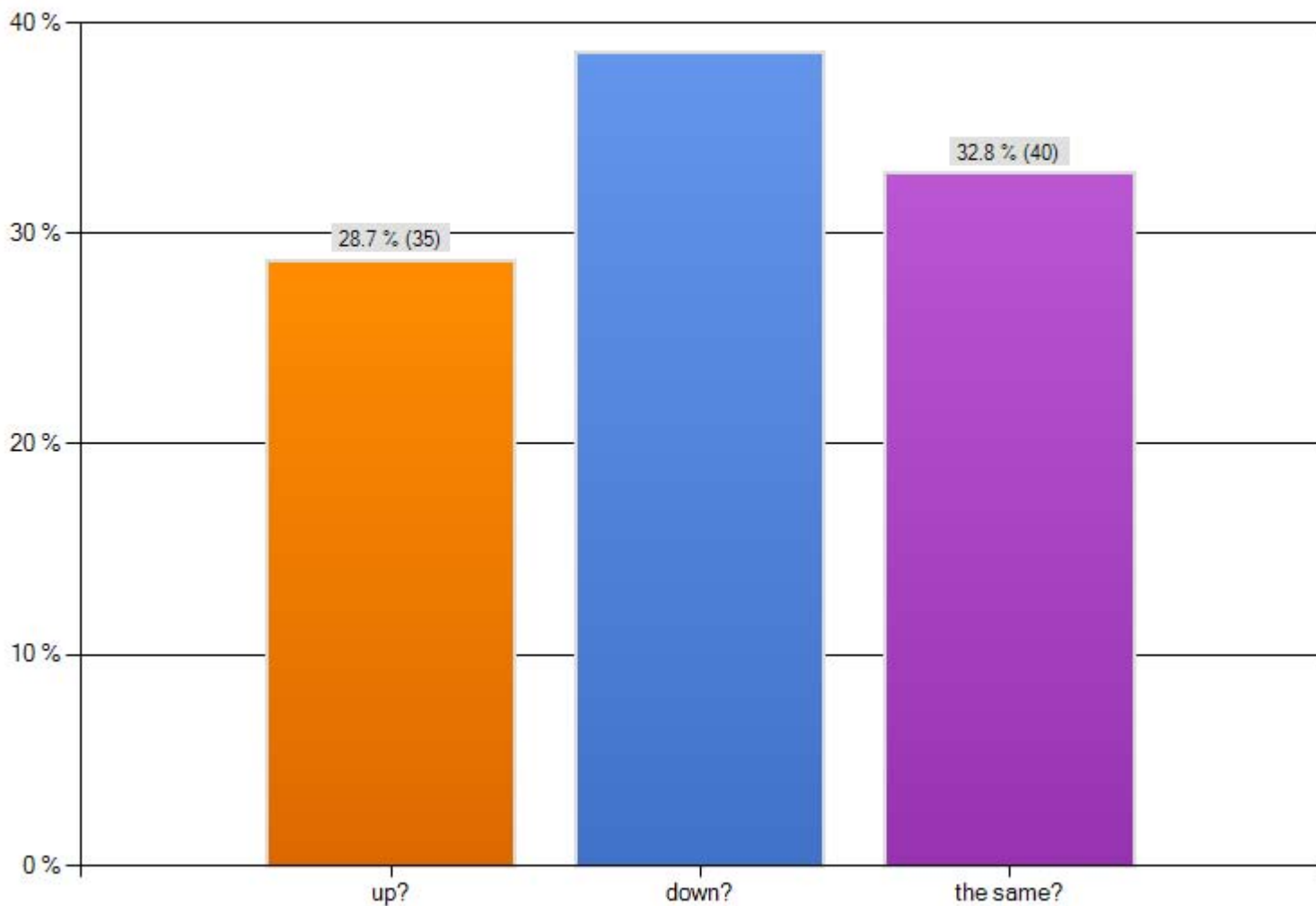
Demographics: Is your school...? Choose best answer.



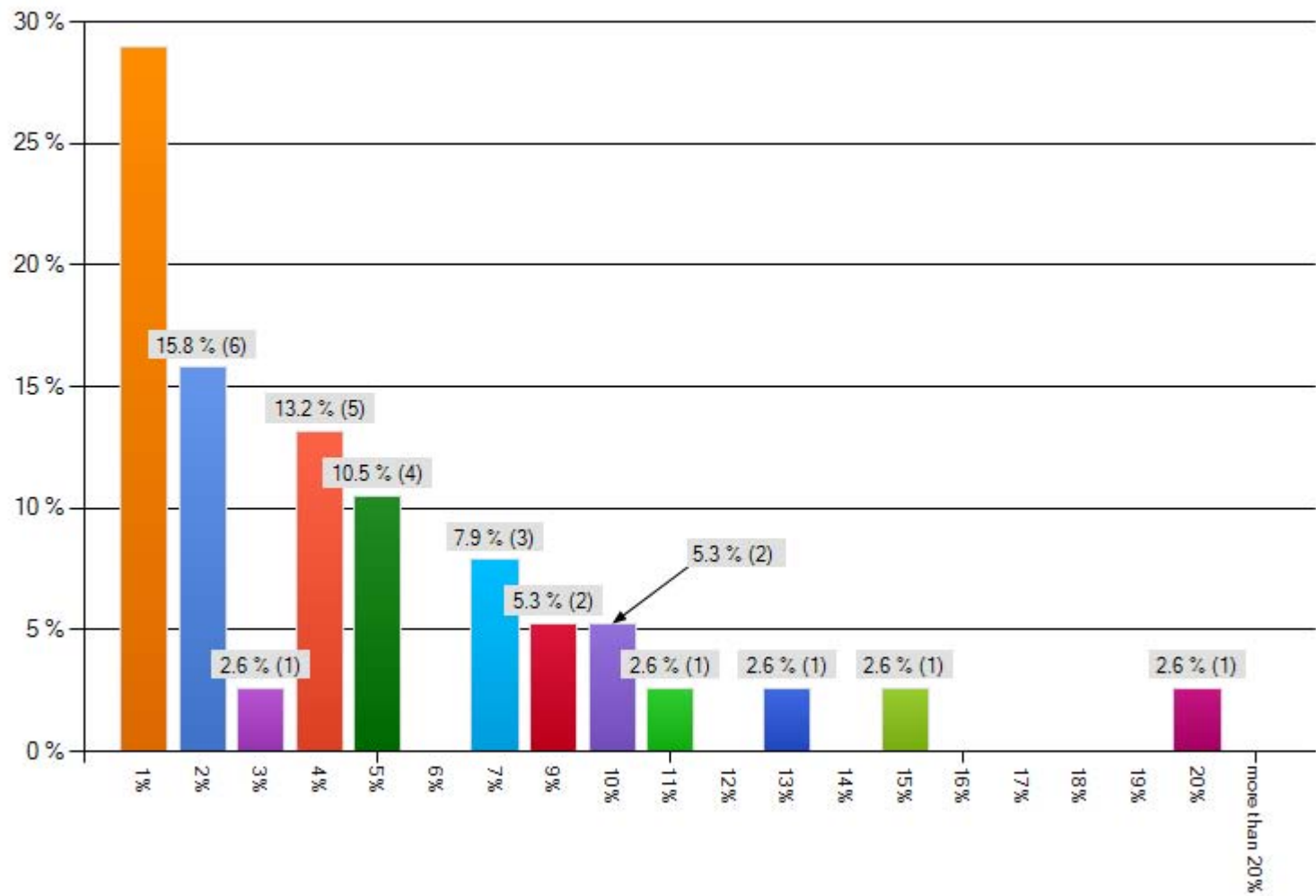
Demographics: What is your total enrollment for this CURRENT YEAR?



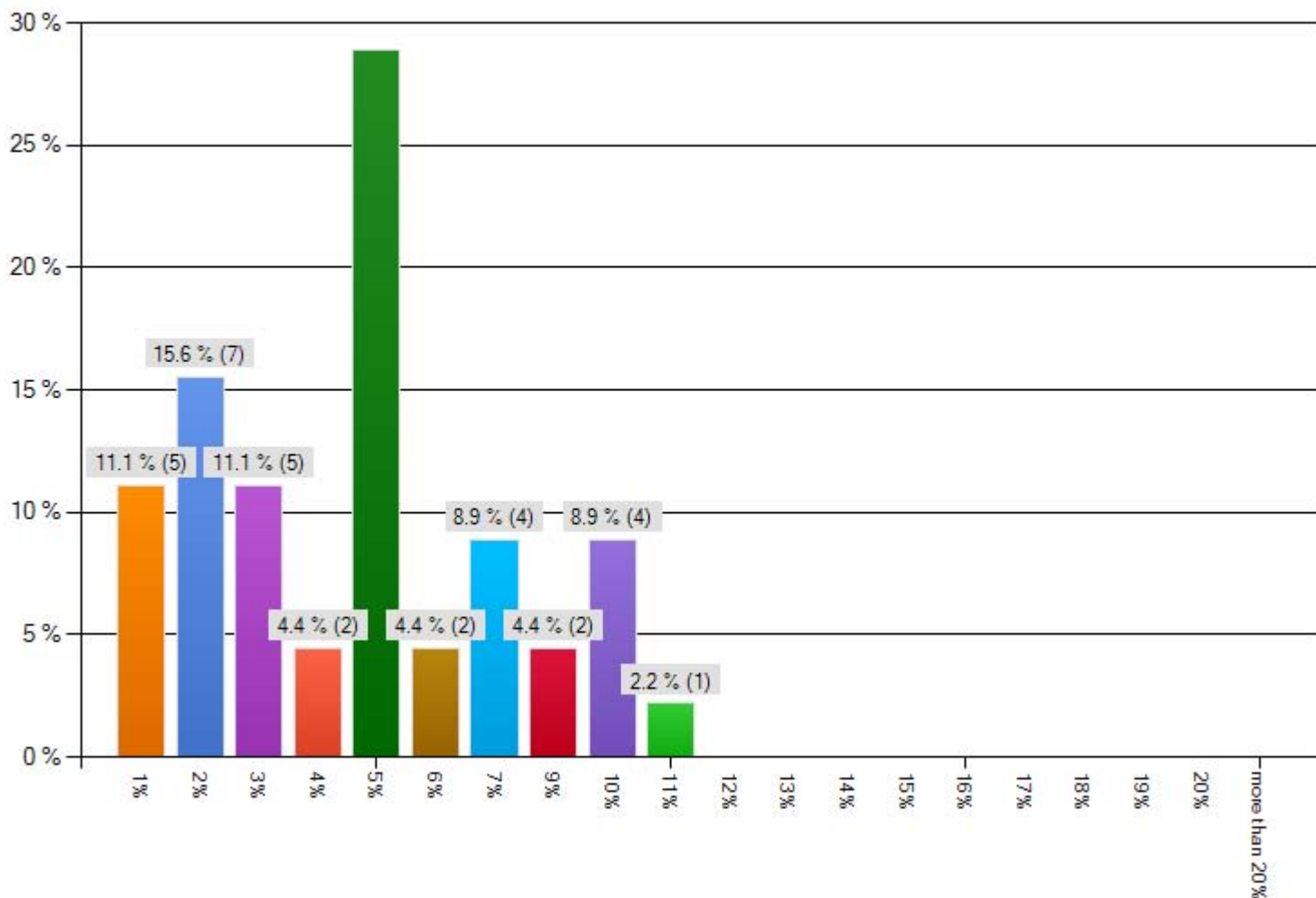
Enrollment Comparisons: As of now, compare CURRENT YEAR enrollment to PROJECTED ENROLLMENT FOR NEXT YEAR (10-11). Will you be...



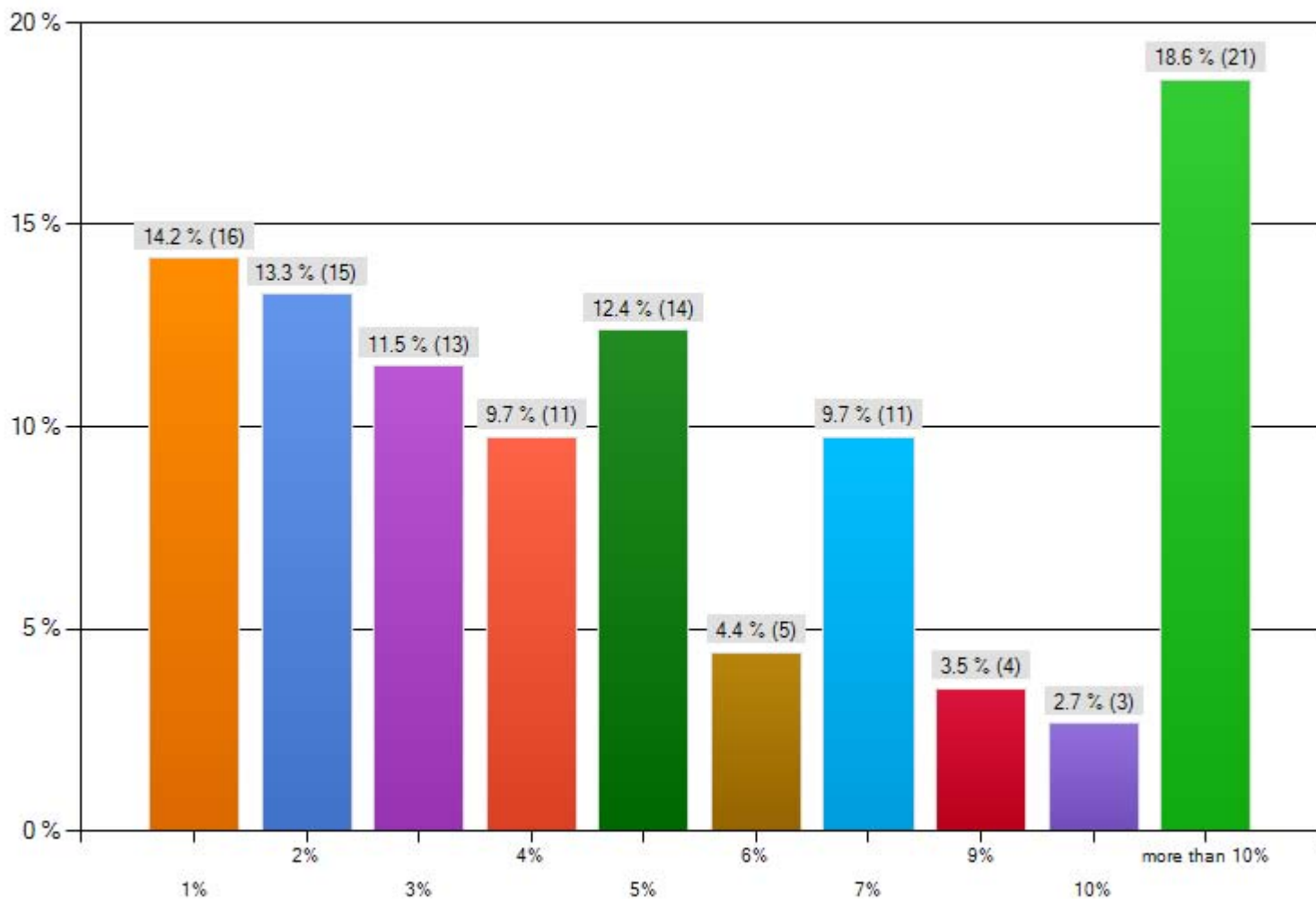
Enrollment Comparisons: If you are projecting your NEXT YEAR'S ENROLLMENT will be UP, please check the closest percentage.



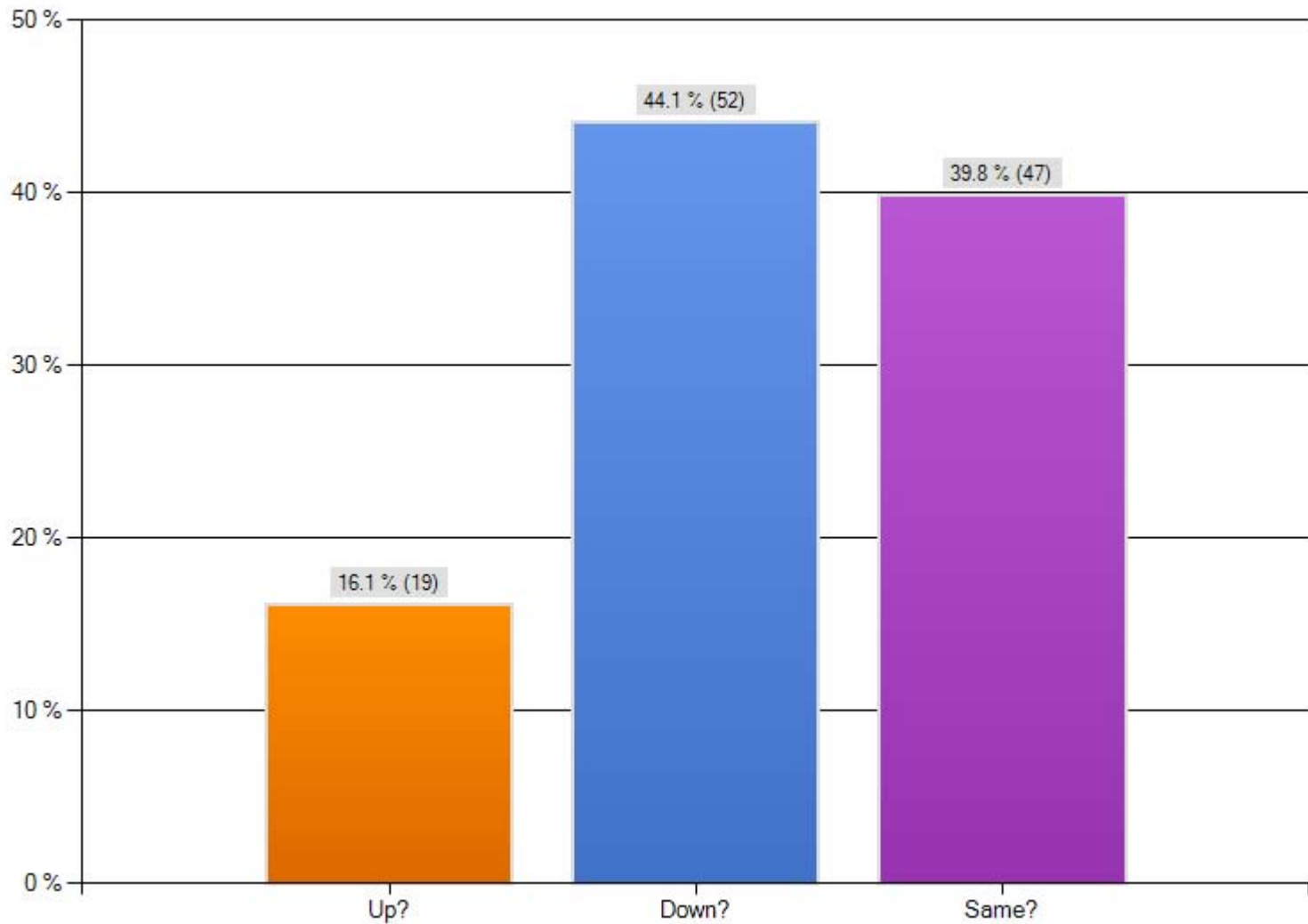
Enrollment Comparisons: If your are projecting your NEXT YEAR'S ENROLLMENT will be DOWN, please check the closest percentage..



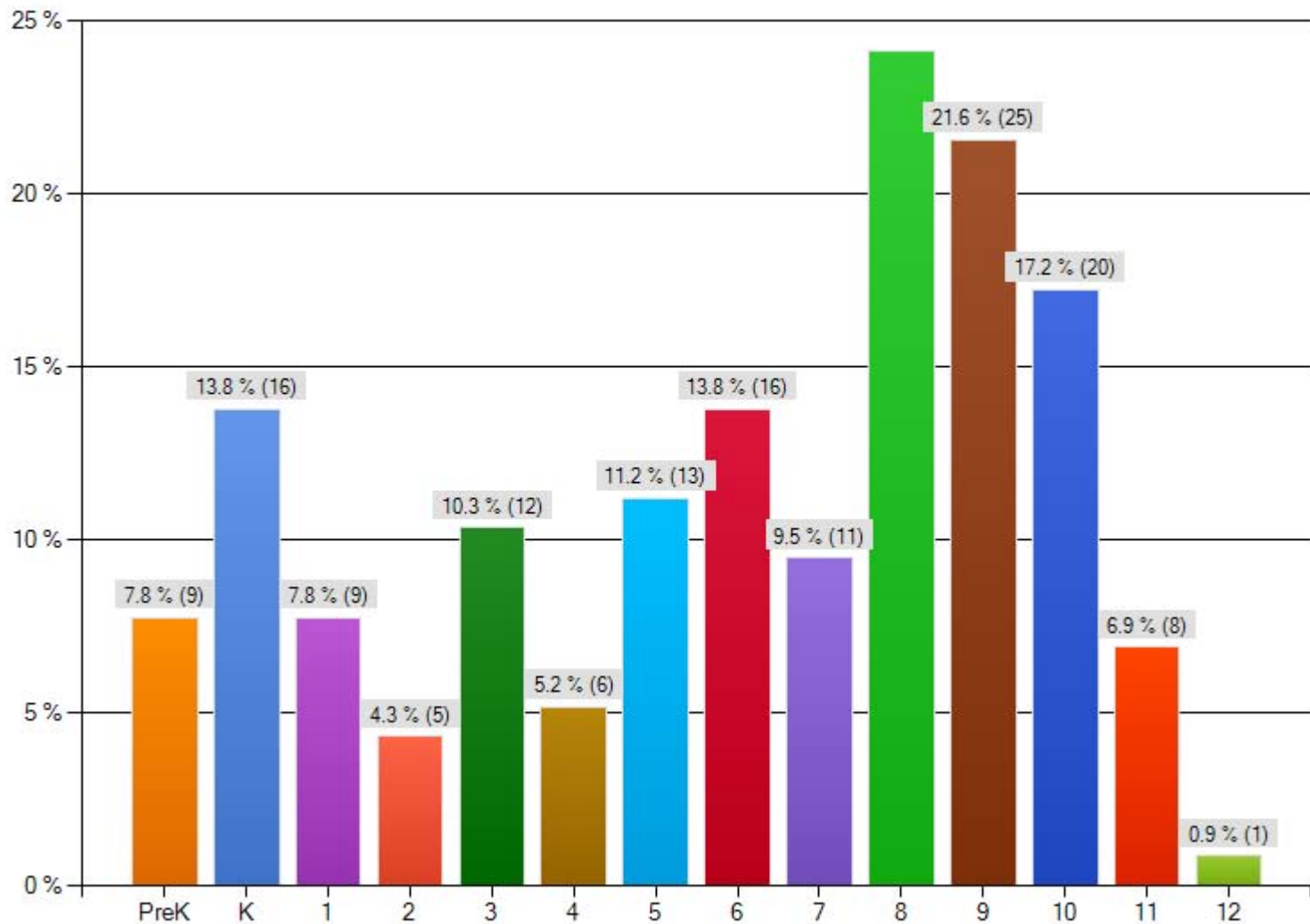
ATTRITION: What percentage of currently enrolled students eligible for re-enrollment have NOT re-enrolled for NEXT YEAR?



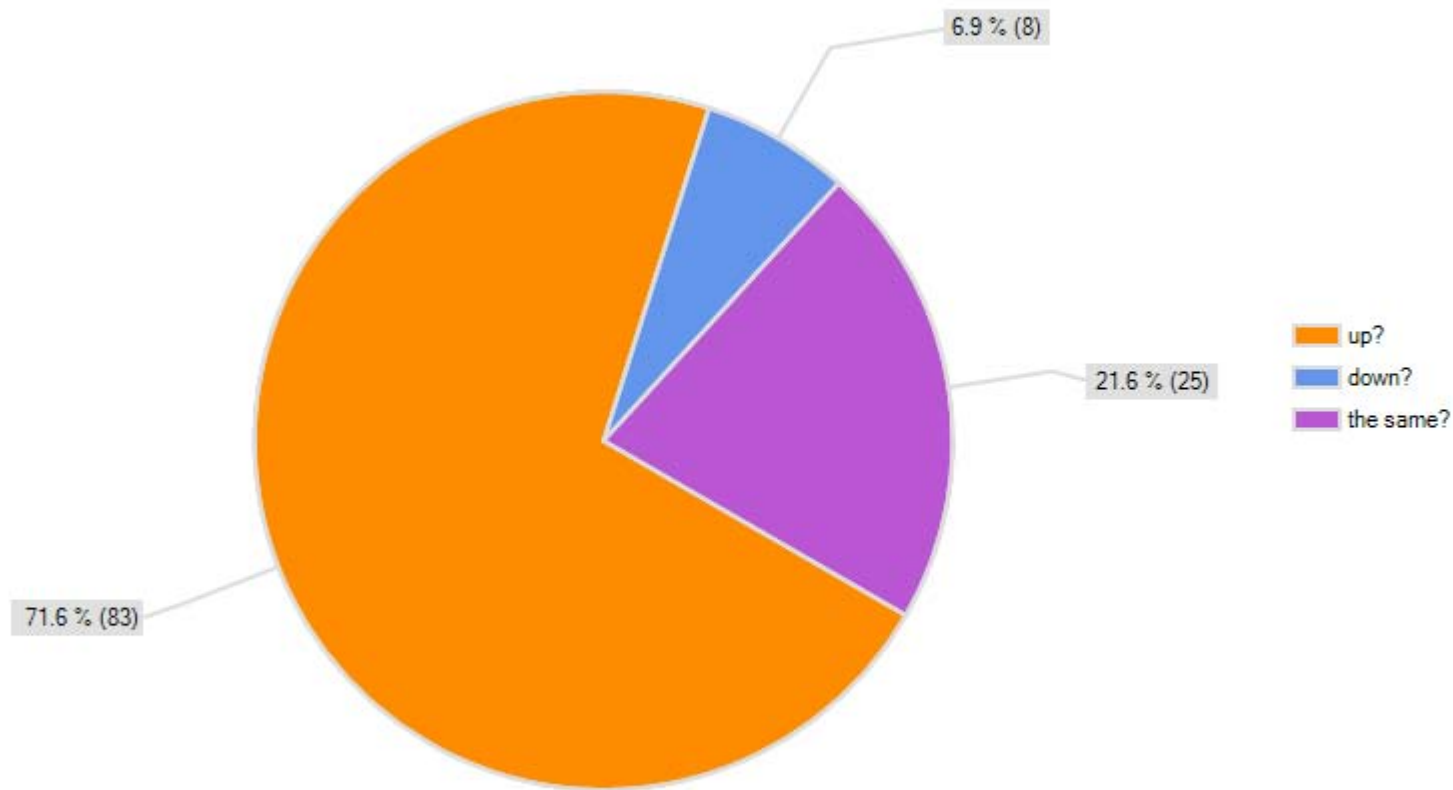
ATTRITION: How does this current attrition rate compare to last year?



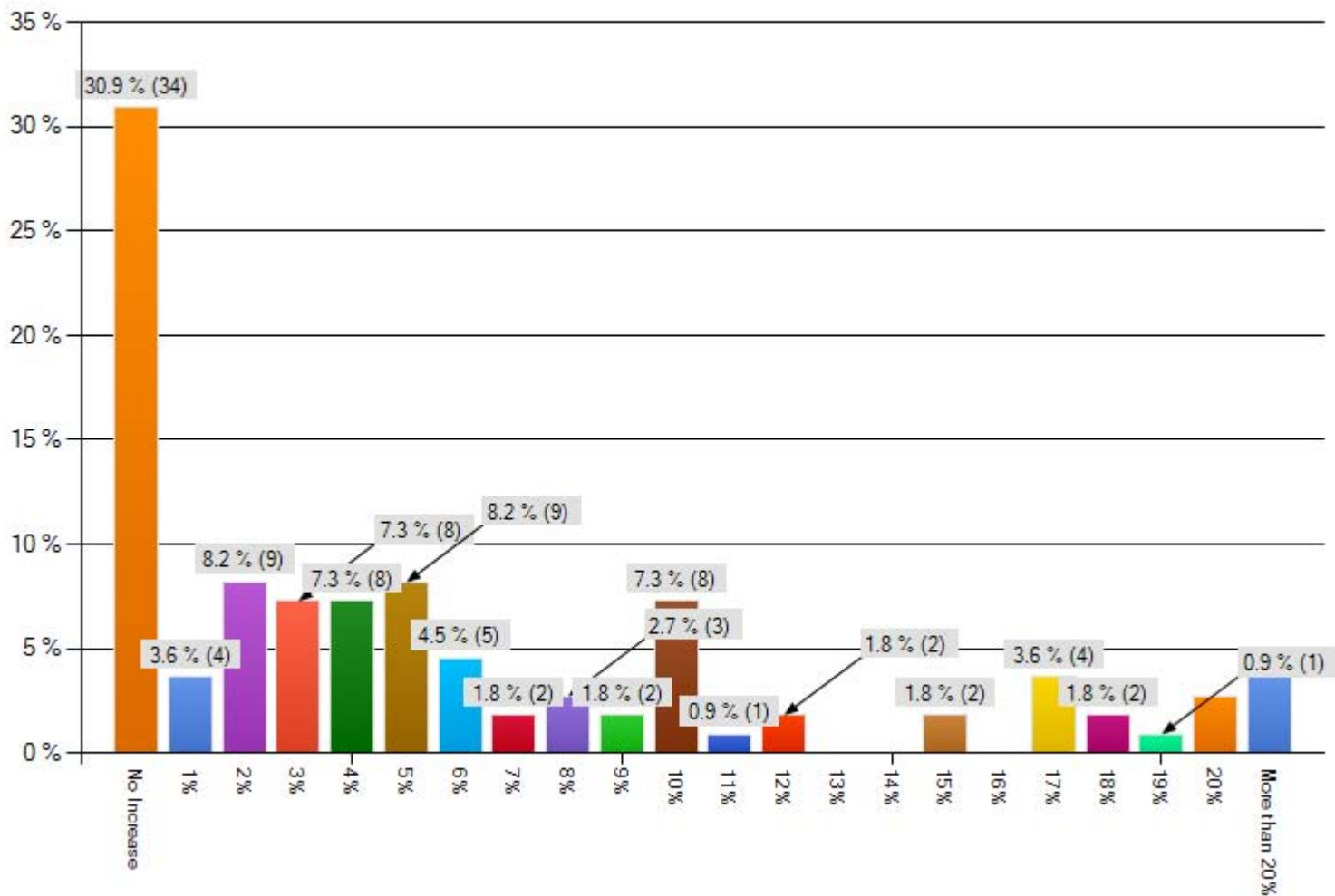
ATTRITION: Please check the grade or grades with the greatest attrition.



Financial Aid: How do requests for financial aid for the COMING YEAR compare to requests for the CURRENT YEAR?



Financial Aid: How much will next year's financial aid budget increase over this year's budget?



Please check the grade or grades you are most concerned about in terms of enrollment for the COMING YEAR.

