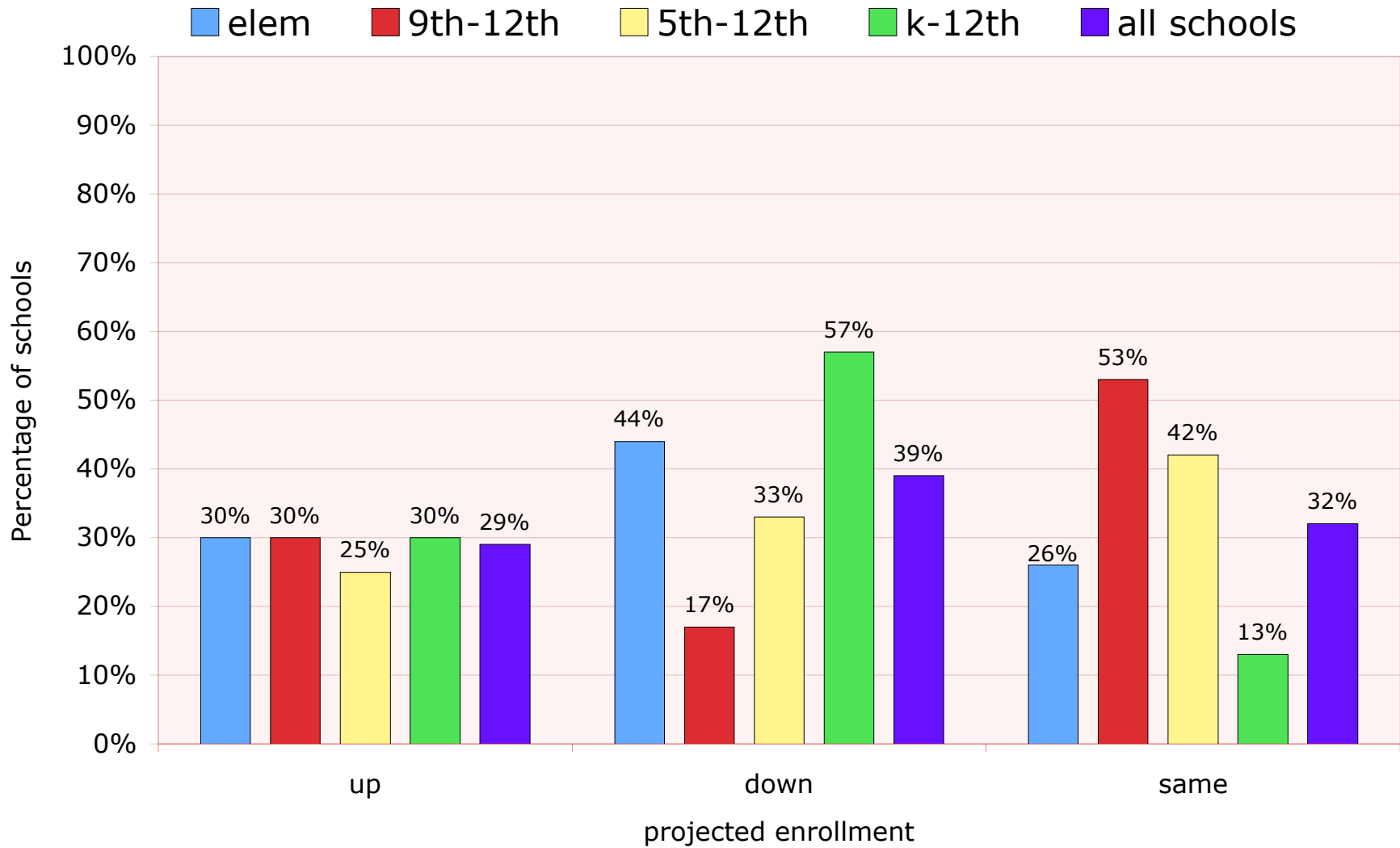
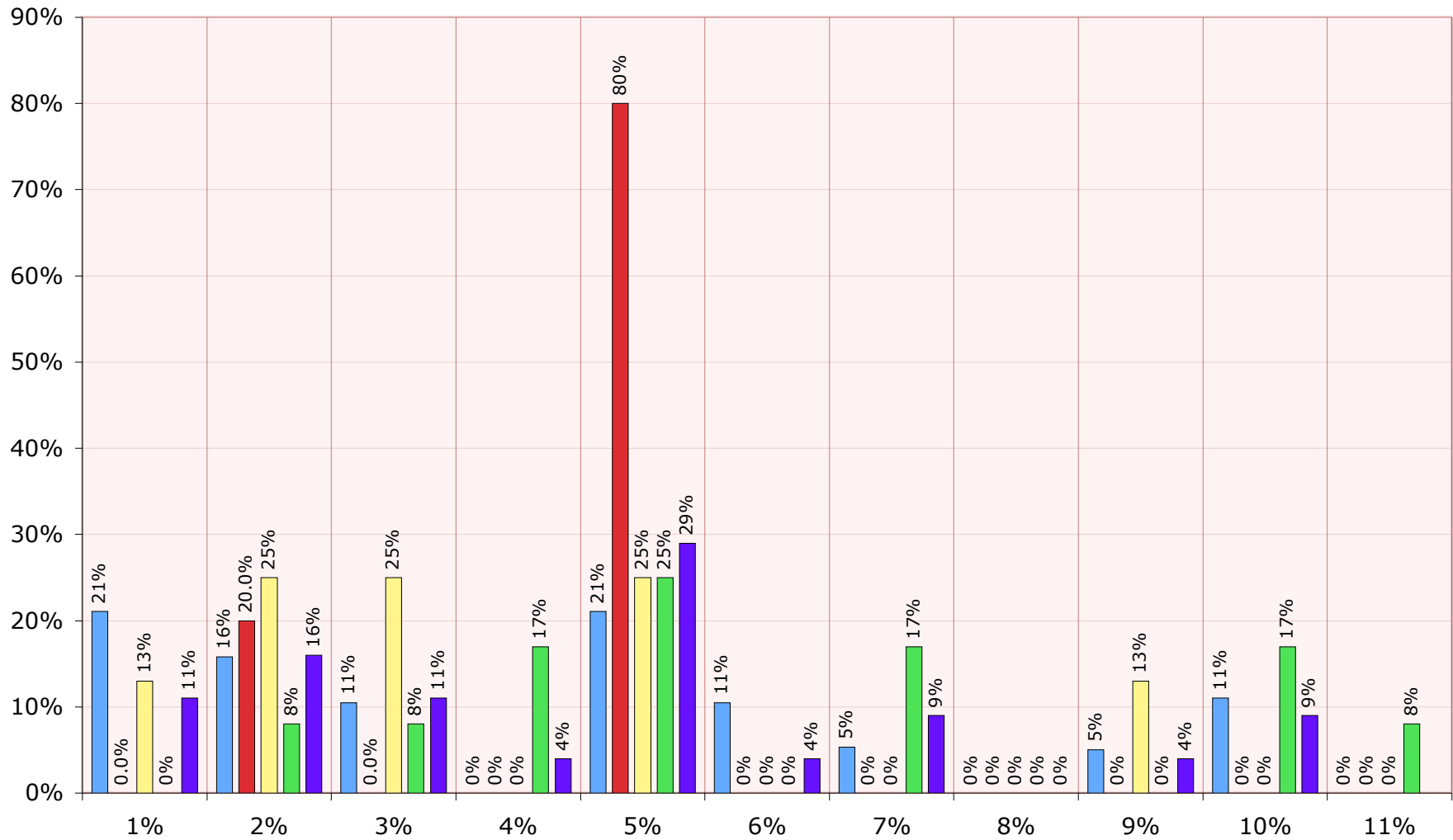


# ENR SURV 4-10: School Type, Grades, Combined: Enrollment Up or Down %

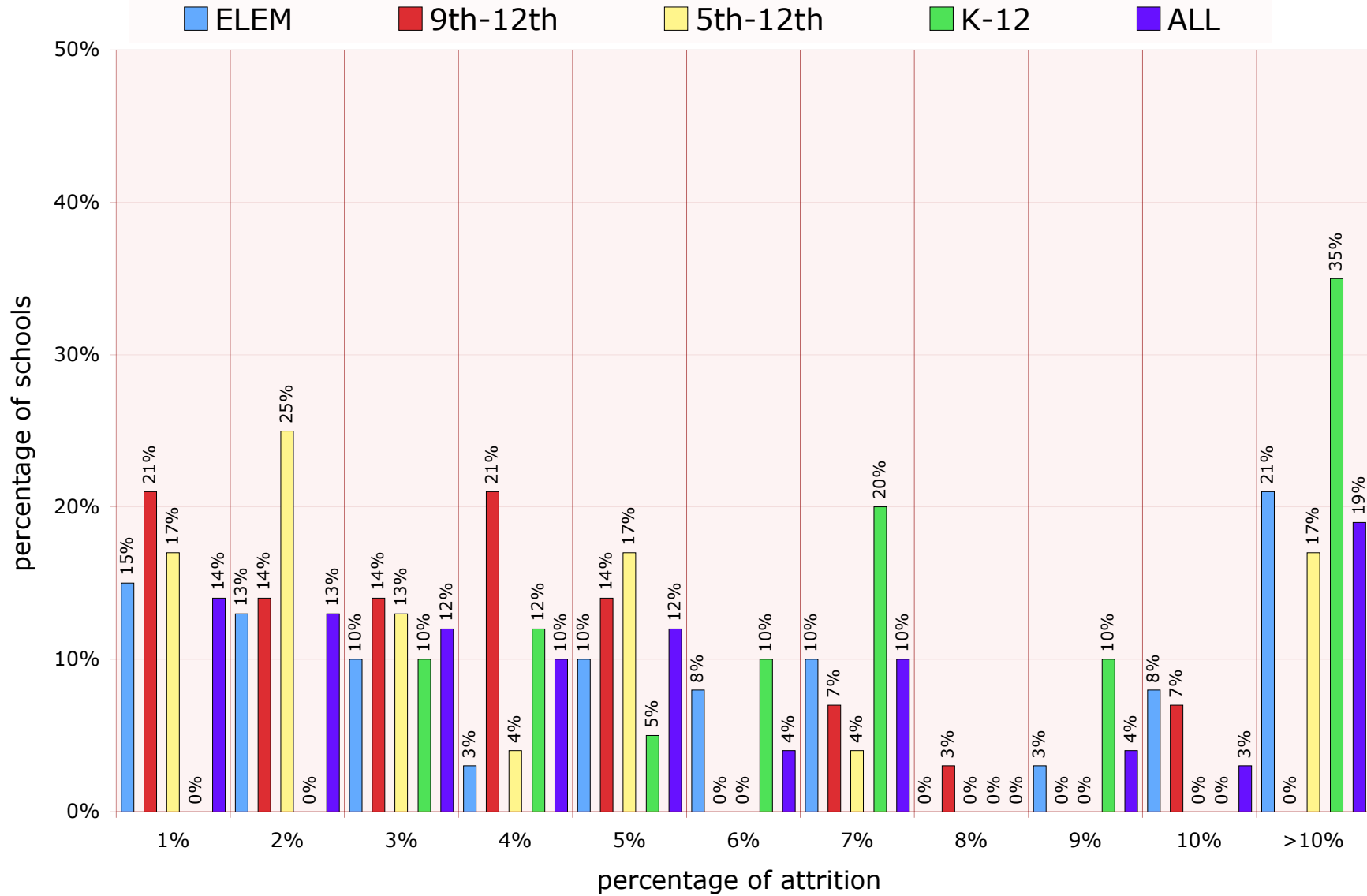


## ENR SURV 4-10 - School Type: Grades, Combined, % Enrollment Down

■ elem (20) 
 ■ 9th-12th (5) 
 ■ 5th-12th (8) 
 ■ k-12th (12) 
 ■ all schools (45)

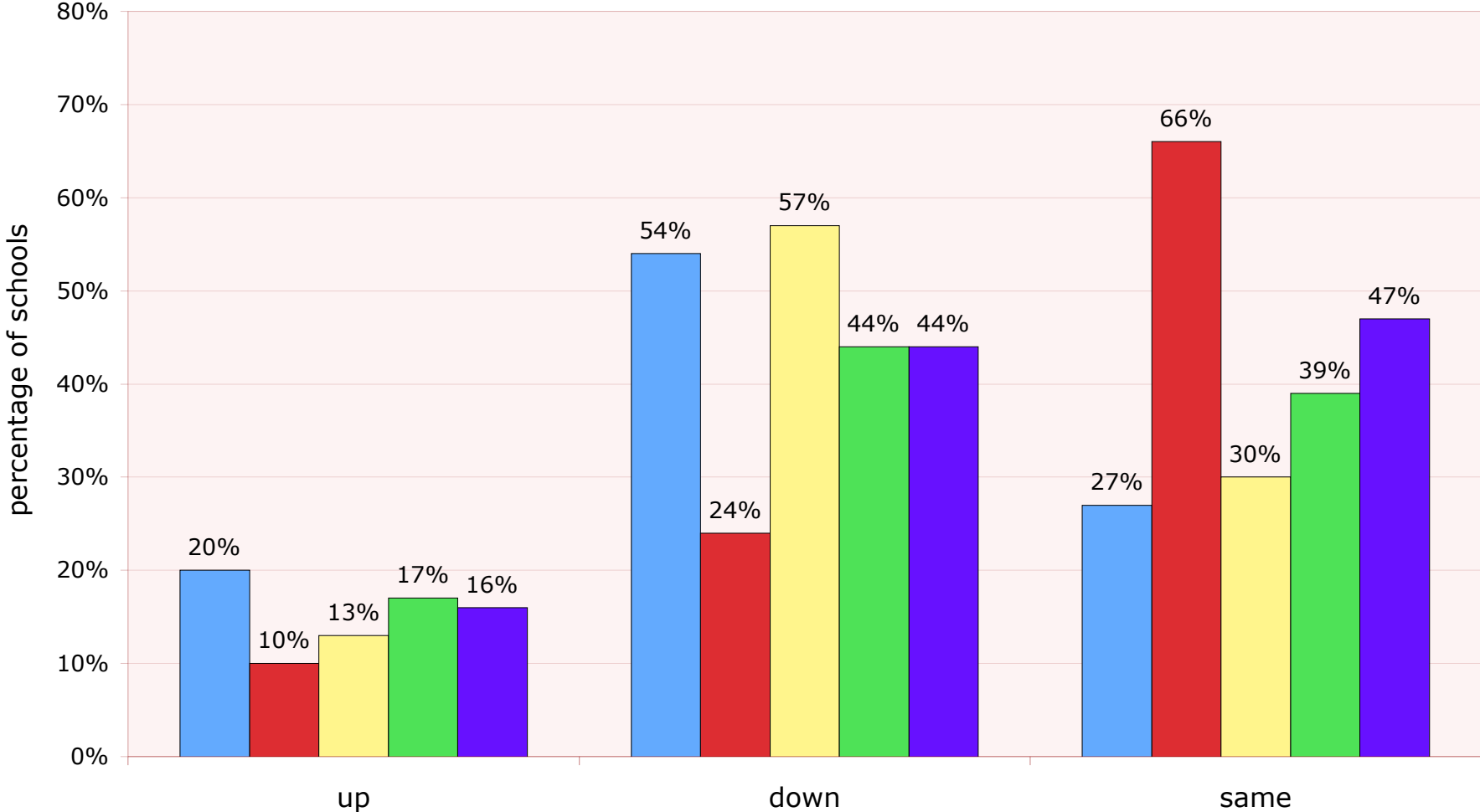


ENR SURV 4-10:School Type, Grades, Combined (113): Attrition Percentage



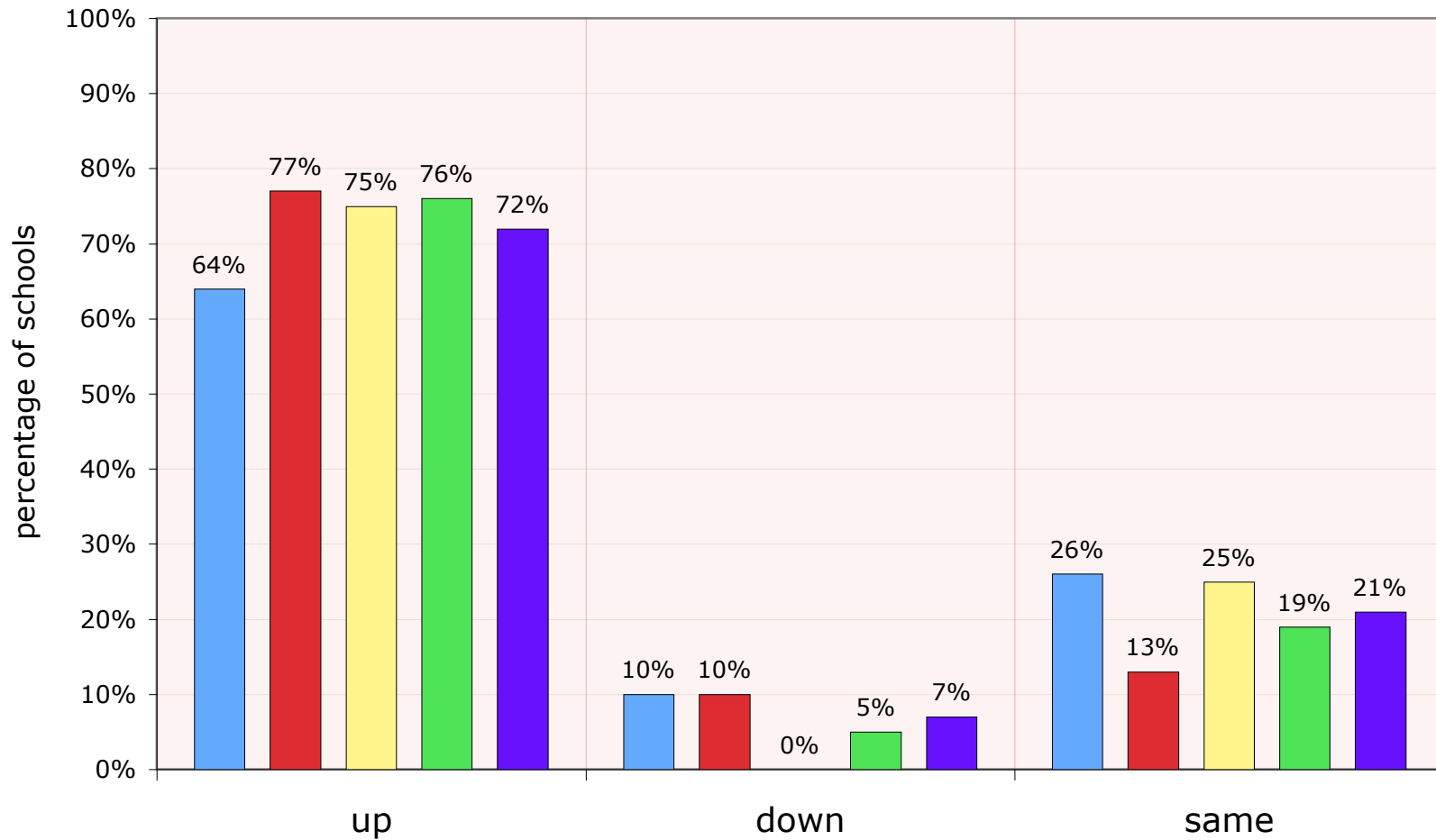
ENR SURV 4-10: School Type: Grades, Combined - Attrition vs. Last Year

ELEM 9th-12th 5th-12th K-12 ALL



ENR SURV 4-10: School Type, Grades, Combined:  
Requests for Financial Aid for Coming Year

elem 9th-12th 5th-12th K-12 all



ENR SURV 4-10: School Type, Grades, Combined: % Increase in Financial Aid Budget for FY '11 (absence of column = 0%)

